

REVISIONS			
LTR	DESCRIPTION	DATE	APPVD

OPTIONS

Bollard Material (3" Nominal Size)

- FSS08000 Sch 10 Stainless Steel
- FSS08040 Sch 40 Stainless Steel
- FSS08080 Sch 80 Stainless Steel
- FCS08040 Sch 40 ASTM A-53 Carbon Steel
- FCS08080 Sch 80 ASTM A-53 Carbon Steel

Stainless Steel Bollard Finish

- Polished #4 Finish
- As Specified _____

Carbon Steel Bollard Finish

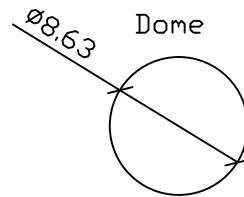
- Powdercoat RAL # _____
- As Specified _____

Stainless Steel Bollard Material

- Type 304
- Type 316

Bollard Cap Style

- Dome
- Standard Flat
- Reveal
- Sloped



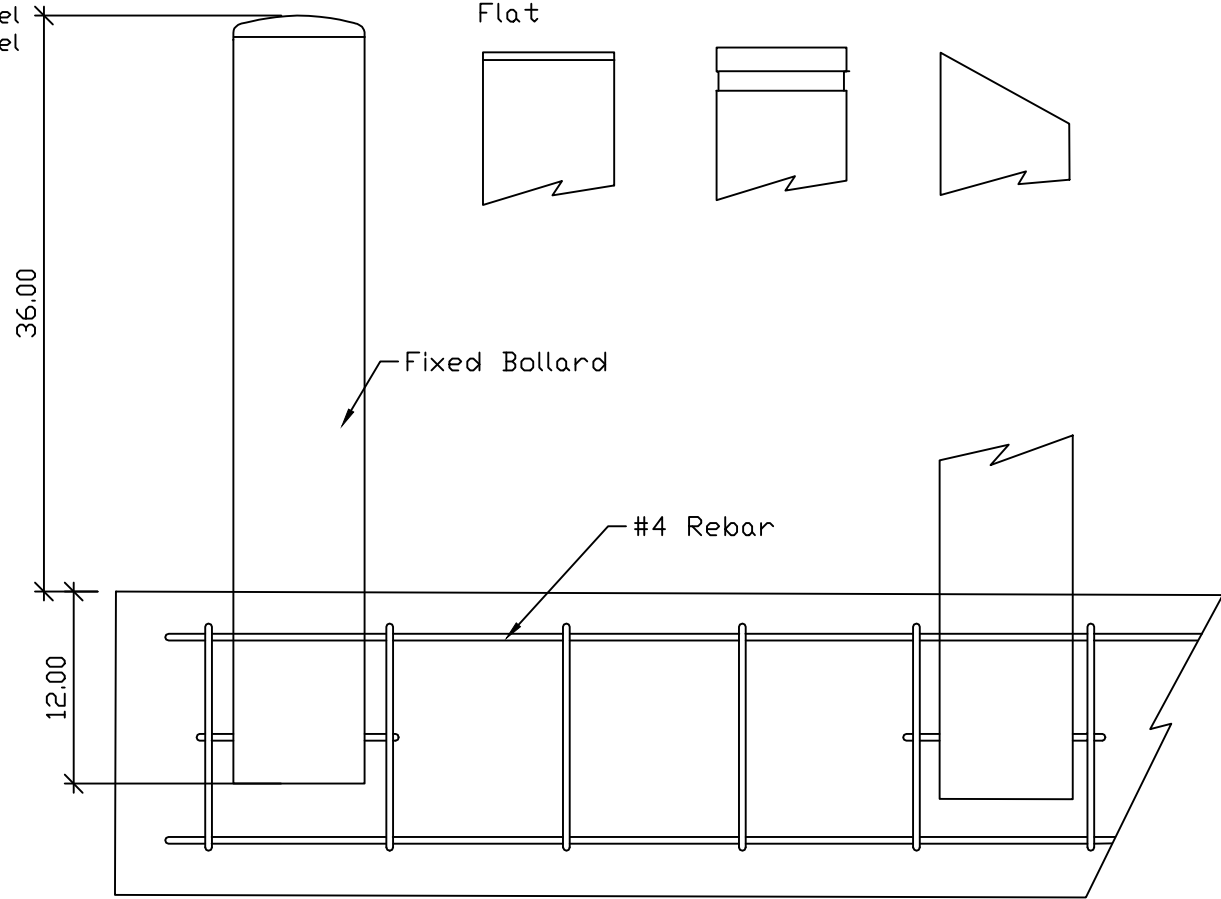
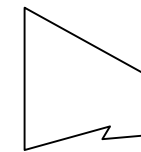
Standard
Flat



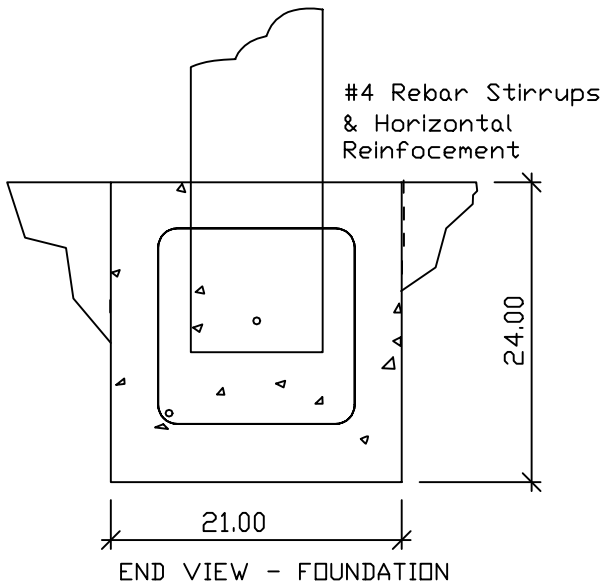
Reveal



Slope



ELEVATION VIEW - FOUNDATION
(CONCEPTUAL DESIGN ONLY)



END VIEW - FOUNDATION

APPLICATION	
NEXT ASSY	USED ON

SERIES NUMBER:	XX-S080-XX	CAGE CODE	SIZE	DRAWING NUMBER:
PRODUCT FAMILY:	FIXED BOLLARD	6NQJ8		8in Cutsheet Size A - R1
PRODUCT CLASS:	STANDARD OR CUSTOMER DEFINED	DRAWN BY:	MJW	DRAWING REV:
PRODUCT LINE:	BOLLARD	CHECKED BY:		SHEET: 1 OF 1
PRODUCT SUB LINE:	FIXED	APPROVED BY:		RELEASE DATE:
1-800-BOLLARDS, Inc. 24370 Northwestern Hwy, Suite 250 Southfield, MI. 48075 PHONE: 1-800-BOLLARDS WEB: WWW.1800BOLLARDS.COM EMAIL: INFO@1800BOLLARDS.COM				TITLE: BOLLARD, FIXED