

REVISIONS			
LTR	DESCRIPTION	DATE	APPVD

OPTIONS

Bollard Material (3" Nominal Size)

- FSS05000 Sch 10 Stainless Steel
- FSS05040 Sch 40 Stainless Steel
- FSS05080 Sch 80 Stainless Steel
- FCS05040 Sch 40 ASTM A-53 Carbon Steel
- FCS05080 Sch 80 ASTM A-53 Carbon Steel

Stainless Steel Bollard Finish

- Polished #4 Finish
- As Specified _____

Carbon Steel Bollard Finish

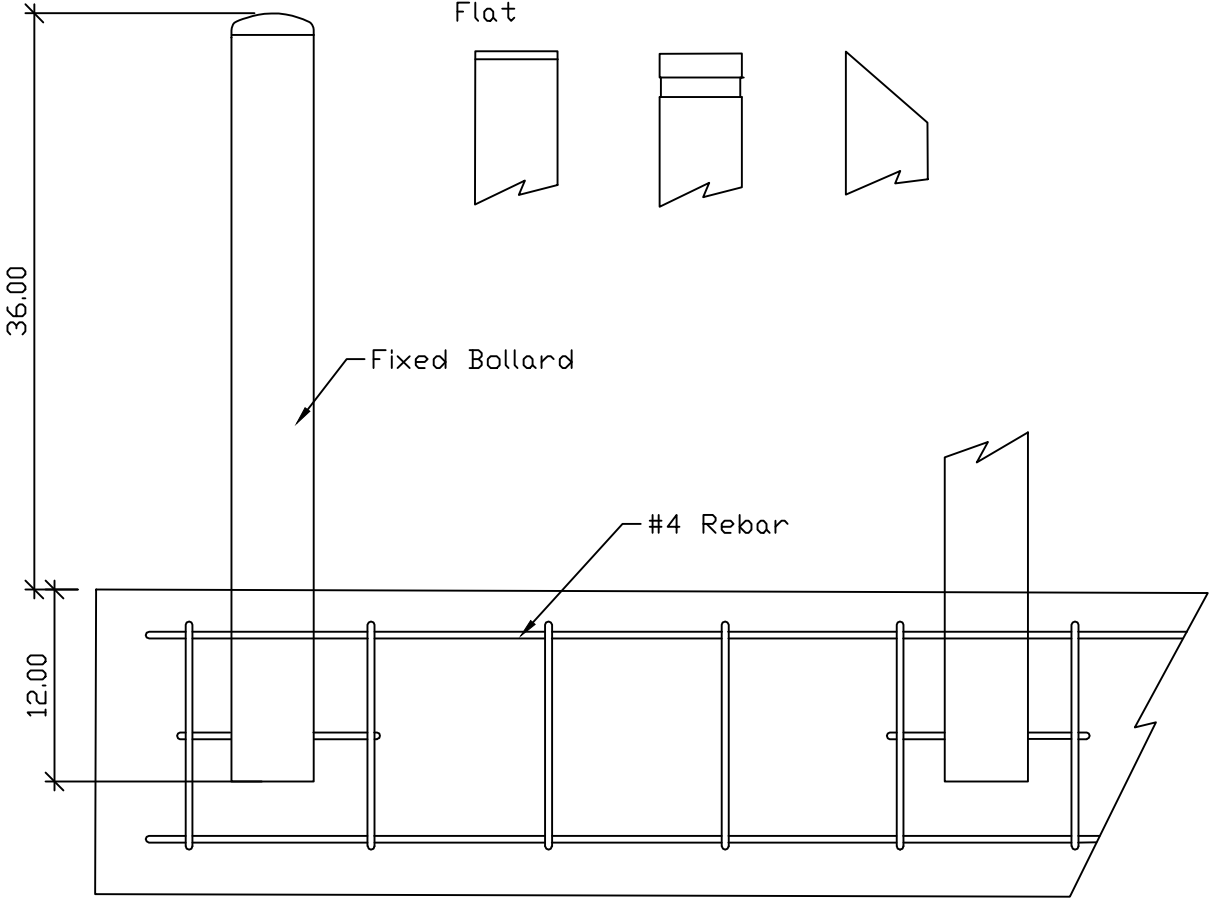
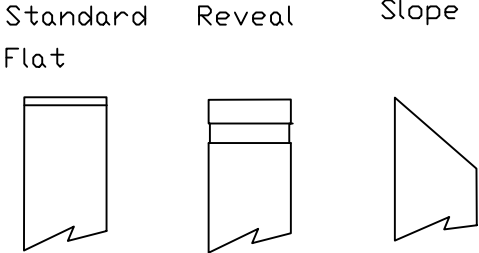
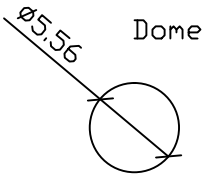
- Powdercoat RAL # _____
- As Specified _____

Stainless Steel Bollard Material

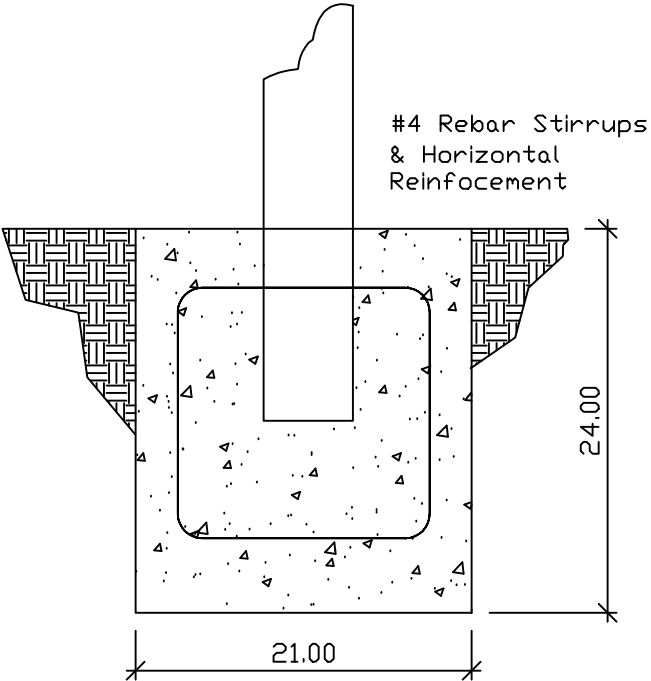
- Type 304
- Type 316

Bollard Cap Style

- Dome
- Standard Flat
- Reveal
- Sloped



ELEVATION VIEW - FOUNDATION
(CONCEPTUAL DESIGN ONLY)



END VIEW - FOUNDATION

SERIES NUMBER: XX-S050-XX	CAGE CODE: 6NQJ8	SIZE: 5in	DRAWING NUMBER: Sin Cutsheet Size A - R1
PRODUCT FAMILY: FIXED BOLLARD	DRAWN BY: MJW	CHECKED BY: MJW	DRAWING REV: SHEET 1 OF 1
PRODUCT CLASS: STANDARD OR CUSTOMER DEFINED	PRODUCT LINE: BOLLARD	PRODUCT SUB LINE: FIXED	APPROVED BY: _____
APPLICATION NEXT ASSY USED ON			TITLE: BOLLARD, FIXED
1-800-BOLLARDS, Inc. 24370 Northwestern Hwy, Suite 250 Southfield, MI 48075 PHONE: 1-800-BOLLARDS WEB: WWW.1800BOLLARDS.COM EMAIL: INFO@1800BOLLARDS.COM			