

REVISIONS			
LTR	DESCRIPTION	DATE	APPVD

OPTIONS

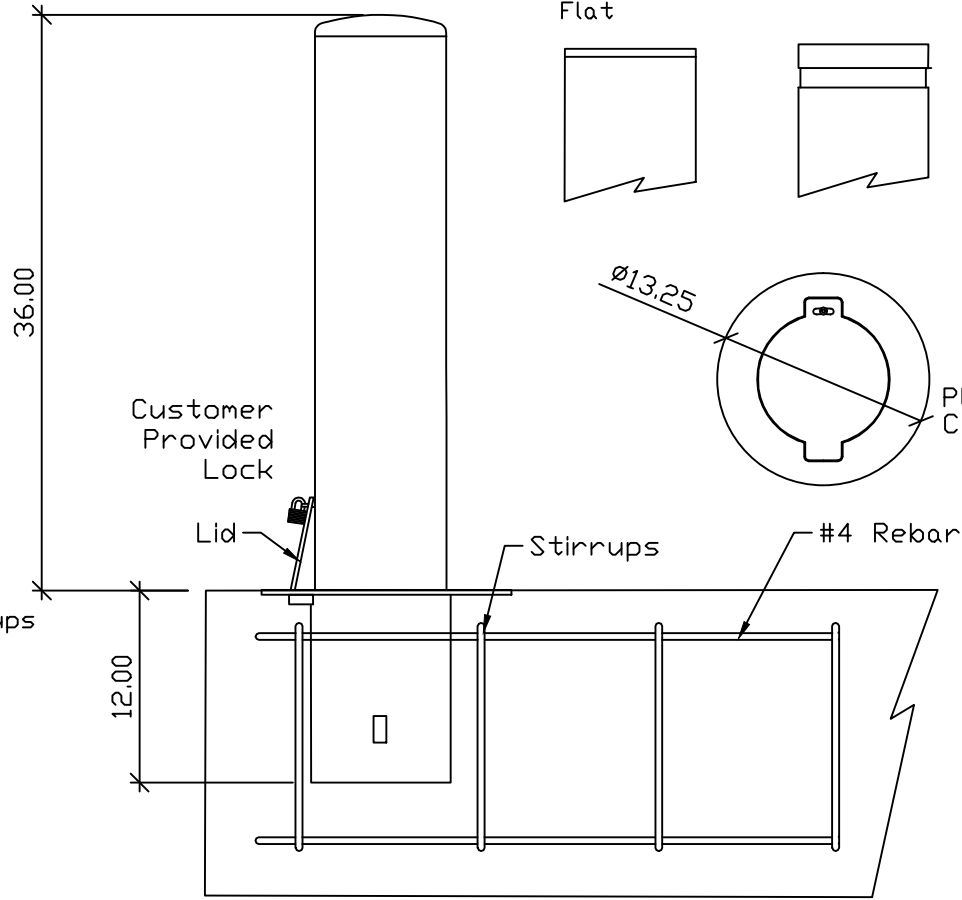
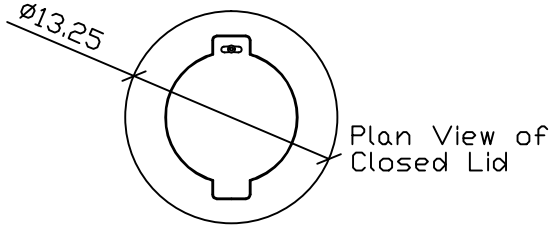
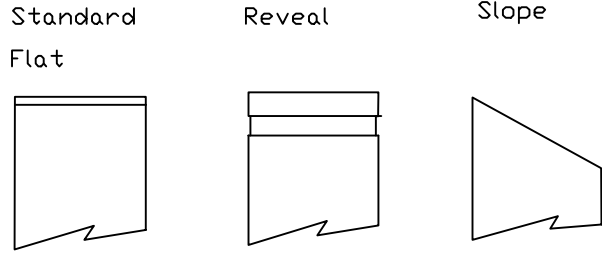
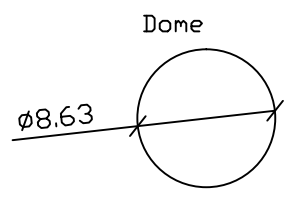
- Bollard Material (3" Nominal Size)
- PSS08000 Sch 10 Stainless Steel
 - PSS08040 Sch 40 Stainless Steel
 - PSS08080 Sch 80 Stainless Steel
 - PCS08040 Sch 40 ASTM A-53 Carbon Steel
 - PCS08080 Sch 80 ASTM A-53 Carbon Steel

- Stainless Steel Bollard Finish
- Polished #4 Finish
 - As Specified _____

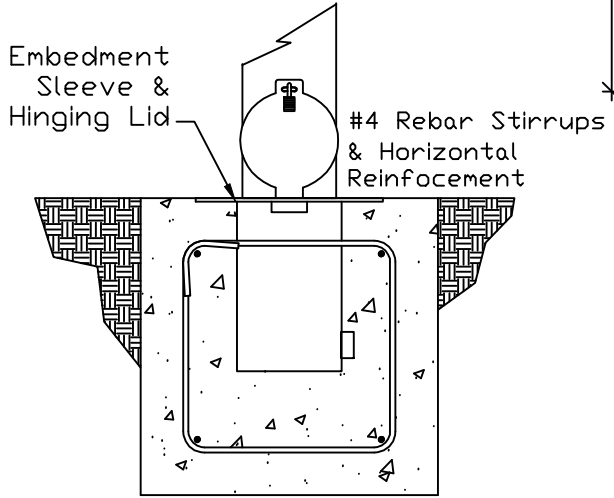
- Carbon Steel Bollard Finish
- Powdercoat RAL # _____
 - As Specified _____

- Stainless Steel Bollard Material
- Type 304
 - Type 316

- Bollard Cap Style
- Dome
 - Standard Flat
 - Reveal
 - Sloped



ELEVATION VIEW - FOUNDATION
 (CONCEPTUAL DESIGN ONLY)



END VIEW - FOUNDATION

APPLICATION	
NEXT ASSY	USED ON

SERIES NUMBER: XX-S080-XX	CAGE CODE: 6NQJ8	SIZE: 6in PL Cutsheet Size A - R1	DRAWING NUMBER:
PRODUCT FAMILY: FIXED BOLLARD	DRAWN BY: MJW	CHECKED BY:	DRAWING REV:
PRODUCT CLASS: STANDARD OR CUSTOMER DEFINED	PRODUCT LINE: BOLLARD	APPROVED BY:	SHEET: 1 OF 1
PRODUCT SUB LINE: LOCKING	TITLE: BOLLARD, LOCKING		RELEASE DATE:
1-800-BOLLARDS, Inc. 24370 Northwestern Hwy, Suite 250 Southfield, MI. 48075 PHONE: 1-800-BOLLARDS WEB: WWW.1800BOLLARDS.COM EMAIL: INFO@1800BOLLARDS.COM			