

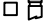

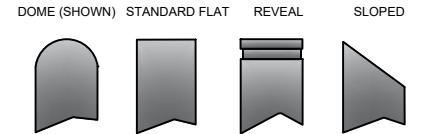
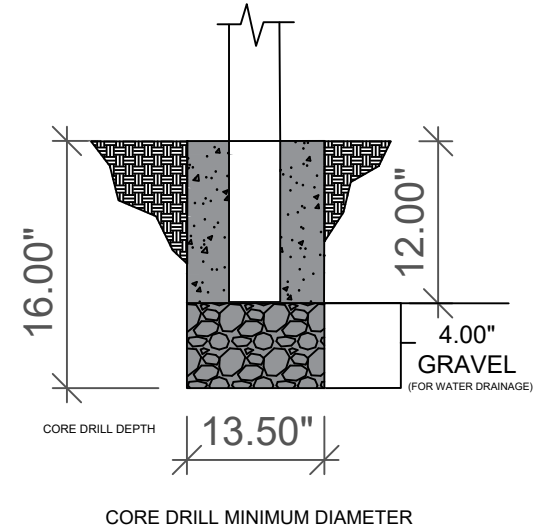
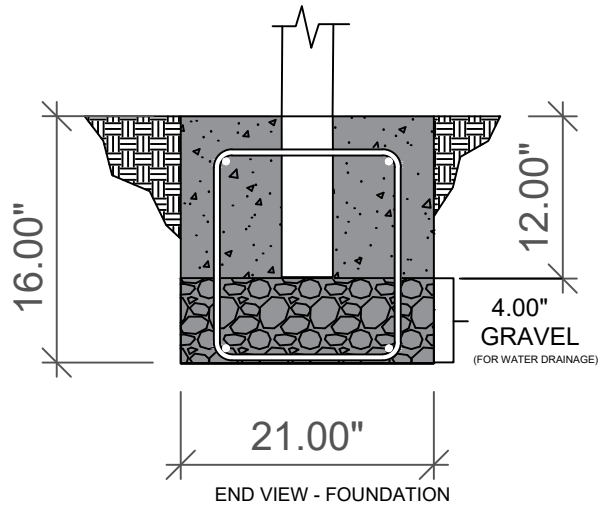
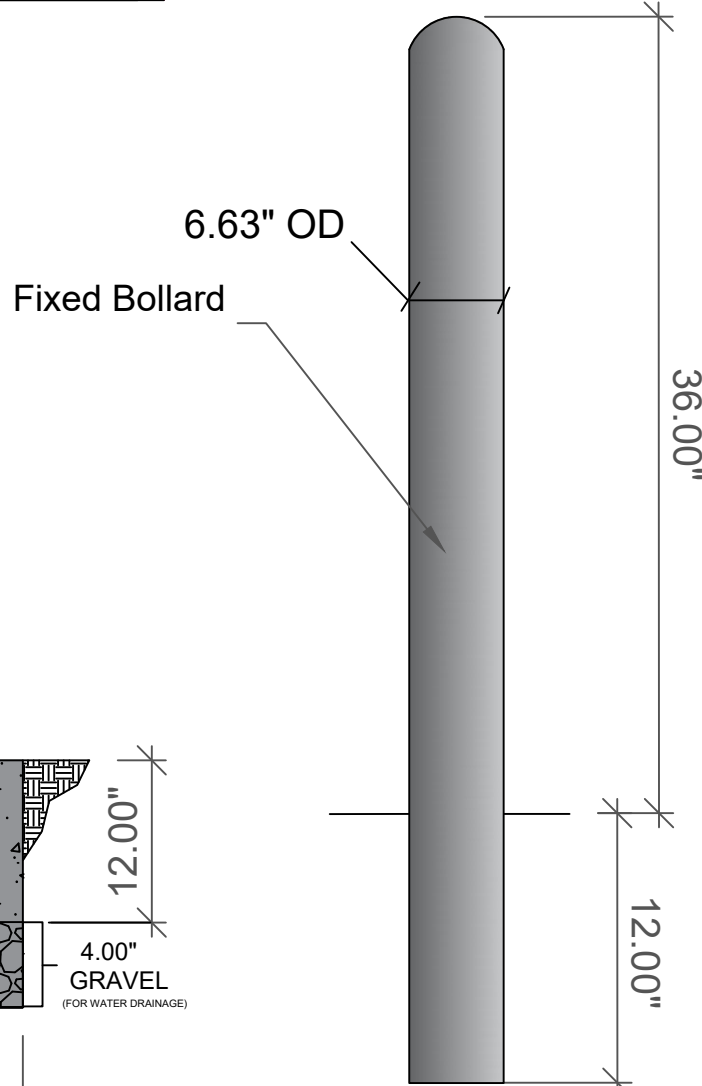


1-800-BOLLARDS

The Bollard Experts

- SELECT DESIRED MATERIAL:
(6" NOMINAL SIZE)
 - FSS06000 SCH 10 STAINLESS STEEL
 - FSS06040 SCH 40 STAINLESS STEEL
 - FSS06080 SCH 80 STAINLESS STEEL
 - FCS06040 SCH 40 ASTM A-53 CARBON STEEL
 - FCS06080 SCH 80 ASTM A-53 CARBON STEEL
- SELECT DESIRED STAINLESS STEEL BOLLARD FINISH:
 - POLISHED #4 FINISH
 - AS SPECIFIED _____
- SELECT DESIRED CARBON STEEL BOLLARD FINISH:
 - POWDER COAT RAL # _____
 - AS SPECIFIED _____
- SELECT DESIRED STAINLESS STEEL BOLLARD MATERIAL:
 - TYPE 304
 - TYPE 316
- SELECT DESIRED BOLLARD CAP STYLE:
 -  DOME (SHOWN)
 -  STANDARD FLAT
 -  REVEAL
 -  SLOPED



REVISIONS			
LTR	DESCRIPTION	DATE	APPVD
COMMENTS			
SPECIFICATIONS			
HEIGHT: 36"			
DIAMETER: 6.63"			
WALL THICKNESS: 0.280" SCHED 40			

NOTES:
 1. INSTALLATION TO BE COMPLETED IN ACCORDANCE WITH MANUFACTURER'S SPECIFICATIONS.
 2. DO NOT SCALE DRAWING.
 3. THIS DRAWING IS INTENDED FOR USE BY ARCHITECTS, ENGINEERS, CONTRACTORS, CONSULTANTS AND DESIGN PROFESSIONALS FOR PLANNING PURPOSES ONLY. THIS DRAWING AND ALL INFORMATION CONTAINED HEREIN WAS CURRENT AT THE TIME OF DEVELOPMENT BUT MUST BE REVIEWED AND APPROVED BY THE PRODUCT MANUFACTURER TO BE CONSIDERED ACCURATE.

APPLICATION		TITLE	
NEXT ASSY	USED ON	BOLLARD, FIXED	
1-800-BOLLARDS, Inc. 10 Hughes Suite A105 Irvine, CA 92618 PHONE: 1-800-BOLLARDS WEB: WWW.1800BOLLARDS.COM EMAIL: INFO@1800BOLLARDS.COM		SERIES NUMBER: YX-S060-XX PRODUCT FAMILY: FIXED BOLLARD PRODUCT CLASS: STANDARD OR CUSTOMER DEFINED PRODUCT LINE: BOLLARD PRODUCT SUB LINE: FIXED	CAGE CODE: 6NGJB DRAWN BY: AJA CHECKED BY: APPROVED BY: SHEET: 1 OF 1 RELEASE DATE: