

1-800-BOLLARDS

The Bollard Experts

10" M50 HIGH SECURITY DEEP MOUNT

- FDMCSR1080 (REMOVABLE)
- FDMCS1080 (FIXED)

CARBON STEEL

SELECT DESIRED CARBON STEEL BOLLARD FINISH:

- POWDER COAT RAL # _____
- AS SPECIFIED _____

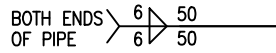
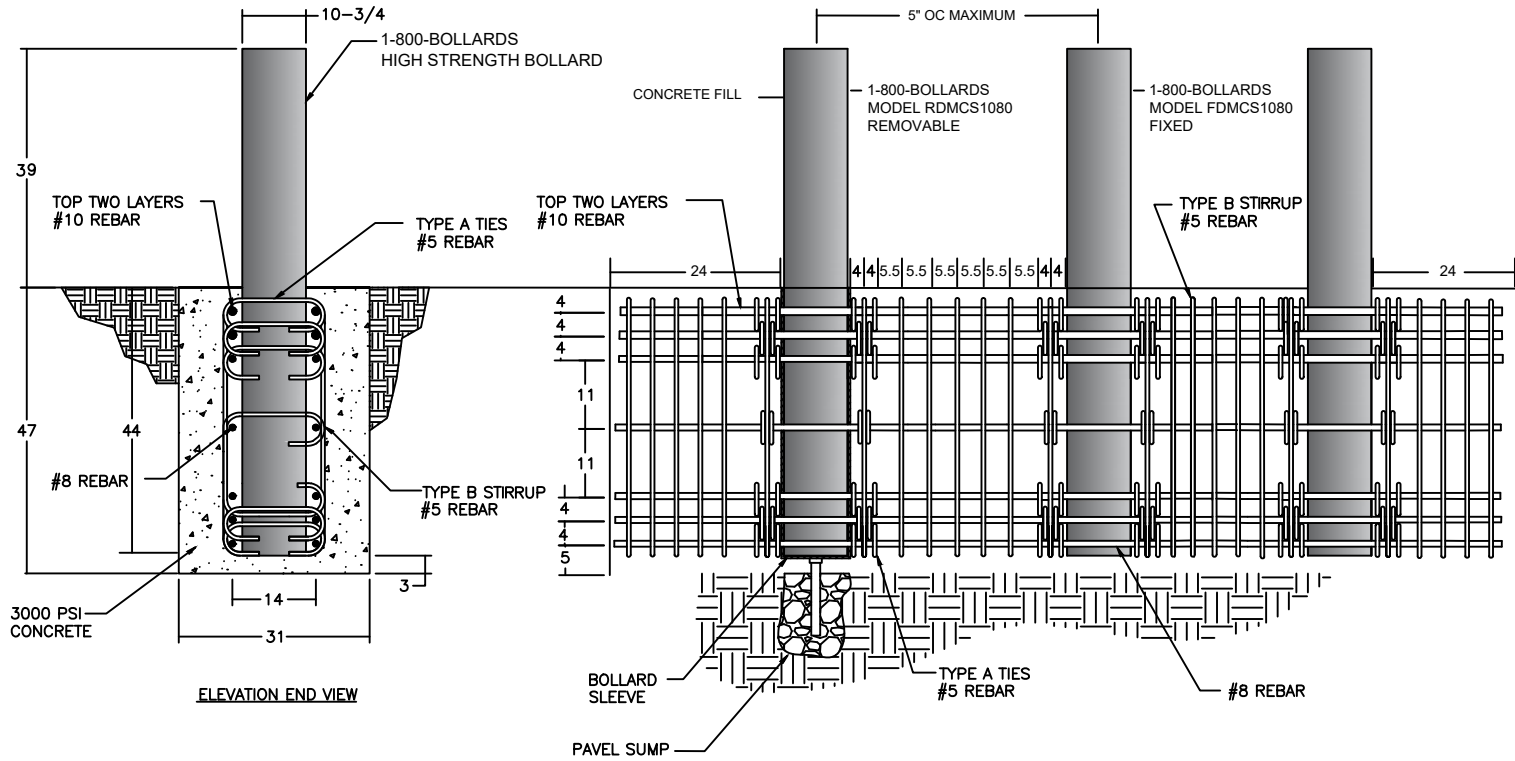
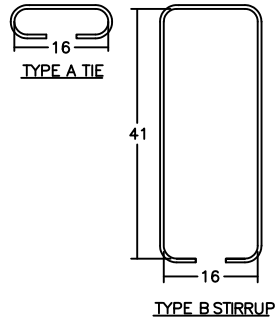
COVER SELECTION

- 304 STAINLESS STEEL
- 316 STAINLESS STEEL

SELECT DESIRED BOLLARD CAP STYLE:

- DOME
- STANDARD FLAT
- REVEAL
- SLOPED

REVISIONS			
LTR	DESCRIPTION	DATE	APPV'D
COMMENTS			
SPECIFICATIONS			
HEIGHT: 39.37"			
DIAMETER: 10.74"			
WALL THICKNESS: 0.594"			



NOTE: WELD STEEL PLATE W/IN STEEL PIPE PARALLEL TO VEHICLE TRAVEL DIRECTION (SEE NOTE 2: USE WITH SCHEDULE 80 PIPE ONLY)

1. CONCRETE PER ASTM C-94, 3000 PSI (20 MPa) MINIMUM @ 28 DAYS.
2. REINFORCING STEEL TO BE ASTM A-615, DEFORMED BILLET
3. COMPACTED BACKFILL SHALL ATTAIN A DRY DENSITY EQUIVALENT TO 95 PERCENT OF THE MAXIMUM OBTAINED IN ASTM D-698. SELECT SOIL OR BACKFILL SHALL BE PLACED IN LAYERS NOT EXCEEDING 6" IN THICKNESS.
4. BOLLARD SHALL BE MANUFACTURED IN A FACILITY CERTIFIED BY UNDERWRITERS LABORATORY.

DOME STANDARD FLAT REVEAL SLOPED (SHOWN)



SERIES NUMBER: XX-S060-XX	CAGE CODE: 6NGJB	REV: M50 DEEP MOUNT	DRAWING NUMBER: M50 DEEP MOUNT
PRODUCT FAMILY: M50 DEEP MOUNT	DRAWN BY: AJA	CHECKED BY:	DRAWING REV: 1 OF 1
PRODUCT CLASS: STANDARD OR CUSTOMER DEFINED	PRODUCT LINE: BOLLARD	PRODUCT SUB LINE: DEEP MOUNT	APPROVED BY:
1-800-BOLLARDS, Inc. 10 Hughes Suite A105 Irvine, CA 92618 PHONE: 1-800-BOLLARDS WEB: WWW.1800BOLLARDS.COM EMAIL: INFO@1800BOLLARDS.COM			
TITLE: BOLLARD, M50 DEEP MOUNT			

APPLICATION	
NEXT ASSY	USED ON

INSTALLATION TO BE COMPLETED IN ACCORDANCE WITH MANUFACTURER'S SPECIFICATIONS.
NOT TO SCALE DRAWING.
THIS DRAWING IS INTENDED FOR USE BY ARCHITECTS, ENGINEERS, CONTRACTORS, CONSULTANTS AND DESIGN PROFESSIONALS FOR PLANNING PURPOSES ONLY. THIS DRAWING MAY NOT BE USED FOR CONSTRUCTION.
ALL INFORMATION CONTAINED HEREIN WAS CURRENT AT THE TIME OF DEVELOPMENT BUT MUST BE REVIEWED AND APPROVED BY THE PRODUCT MANUFACTURER TO BE CONSIDERED ACCURATE.
CONTRACTOR'S NOTE: FOR PRODUCT AND COMPANY INFORMATION VISIT WWW.CADWORLD.COM/1800 AND ENTER REFERENCE NUMBER 5846297.